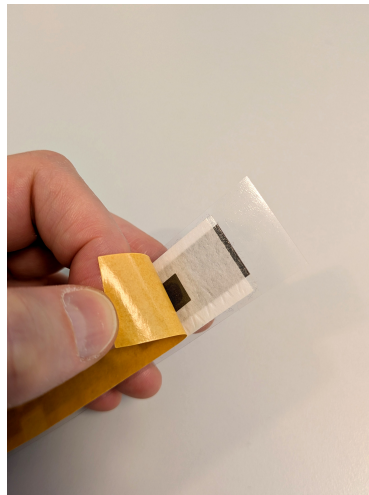


Mounting of Strips Oil Adhesive Guide

1 Remove the brown cover from the adhesive

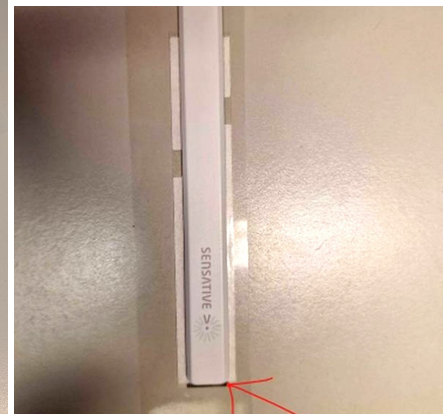
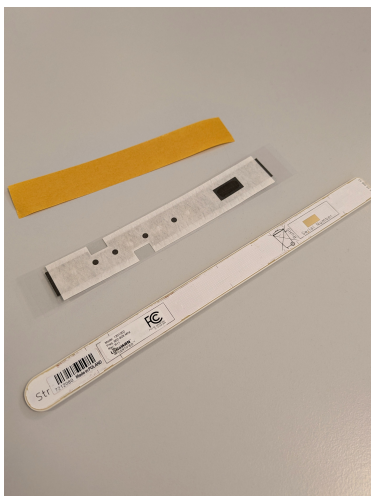
Carefully peel back the brown protective cover from the adhesive strip to expose the sticky surface.

Tip: Attaching a piece of tape to the cover beforehand can make removal easier.



2 Place the Strips on the adhesive

Place the Strips in the centre of the adhesive so that the white edges cover an equal amount of the oil tape on each side. On the flat end of the Strips, the dark part of the adhesive should remain visible and extend beyond the edge.



3 Press the white cloth firmly

Press the white cloth firmly against the sides of the Strips so that it adheres completely to the plastic.



4 Mount to final location

When mounting the Strips to the final location, remove the transparent plastic film and perform a new calibration.

**■ Important —
Recalibration
Required**

Always perform a new calibration after mounting the Strips to their final location. Skipping this step may result in inaccurate sensor readings.